



Medical Association Requests Additional Monies for Unemployment Compensation Trust Fund



Initially, the unemployment insurance trust fund started with a balance of about \$750 million but decreased to around \$100 million because of the job losses caused by the pandemic. Alabama deposited \$300 million of its \$1.8 billion in federal funds from the Coronavirus Aid, Relief, and Economic Security (CARES Act) to replenish the trust fund.

However, the depletion of the trust fund during the pandemic triggered an increase in the “shared costs” paid by employers through an unemployment insurance tax. The Medical Association and other organizations requested another deposit to the Unemployment Compensation Trust Fund to restore the fund to the balance of March 1 to prevent a 200% tax increase on Alabama businesses.

[See the letter to Governor Ivey Here](#)

MEDJET | AIR MEDICAL TRANSPORT & CRISIS RESPONSE MEMEBERSHIPS



Most health and travel insurances will get you to the “nearest acceptable facility.”
Medjet Membership gets you to a hospital at home.

COVID-19 TRANSPORT NOW INCLUDED

(for travel in the US48, Canada, Mexico and the Caribbean. Restrictions apply.)

As a MedjetAssist member, if you become hospitalized internationally or domestically — 150 miles or more from home — Medjet will arrange medical transport to a home-country hospital of your choice for inpatient care. All you pay is your membership fee.

MedjetHorizon includes all the air medical transport benefits of a MedjetAssist membership, plus worldwide travel security and crisis response services to a wide range of safety concerns and threats while traveling, including: terrorism, violent crime, political threat, natural disaster and more.

One in 30 trips end in a medical emergency or safety concern.
Protect yourself with Medjet.

CONTACT

To learn more and enroll in advance of travel, visit **Medjet.com/MASA** or call 800.527.7478, referencing the **Medical Association of the State of Alabama (MASA)**. Reduced annual Medjet membership rates for Medical Association members, under age 75, start at \$235 — A SAVINGS OF **\$60**. Multi-year and Short-term rates are also available.

[Click here for more information](#)

COVID-19 Grant Program Deadline Extended



Due in part to the advocacy efforts of our Association, Governor Ivey has awarded \$35 million in Coronavirus Aid, Relief and Economic Security Act (CARES Act) funds to establish the Alabama Health Care and Emergency Response Providers grant program. The grants will support providers who have been financially impacted by the COVID-19 pandemic.

On a first-come-first serve basis, the state of Alabama will offer cash grants in an amount up to \$15,000 for Alabama health care and emergency response providers that meet eligibility requirements. **The application period for the Alabama Health Care and Emergency Response Provider grant program closes on October 23rd.**

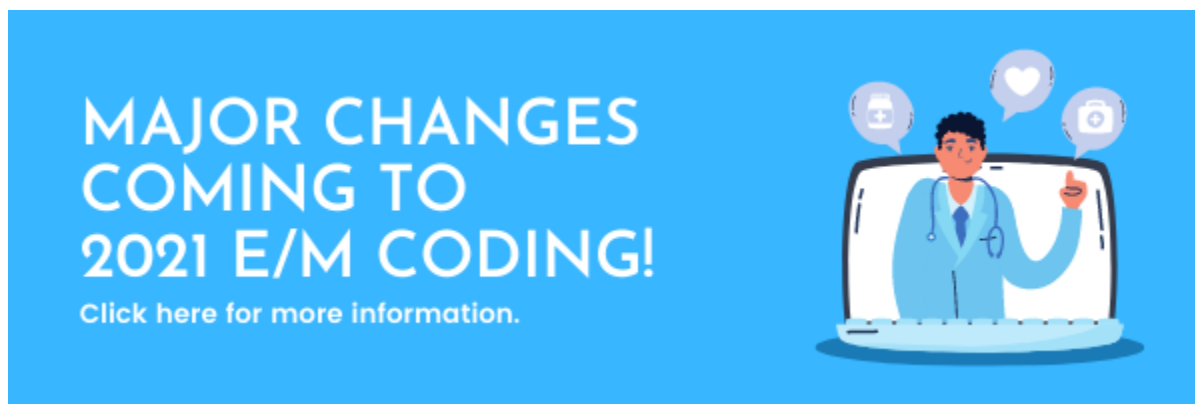
[Gov. Ivey's Press Release](#)

[Coronavirus Relief Fund Information](#)
[Provider Grant Program Overview and Eligibility](#)
[Frequently Asked Questions](#)

For questions, please contact the Coronavirus Relief Funds Office at 334-242-7063 or submissions@finance.alabama.gov (Please include 'Provider Grant Program' in the subject line).

Submit your application

Major Changes to 2021 E/M Coding



Considerable changes are being made to Medicare outpatient evaluation and management (E/M) codes. The transition will take effect on January 1, 2021 and will likely affect physicians across all specialties.

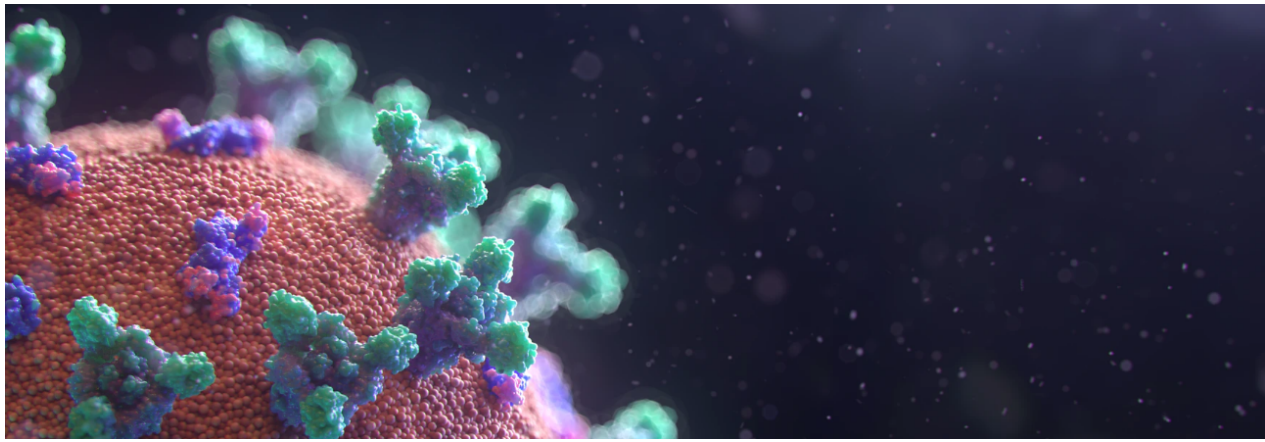
The changes are currently restricted to new and established outpatient visits (CPT codes 99202-99205, 99211-99215) and will impact everyone who assigns codes, manages patient information, or pays claims including physicians, health information managers, coders, payers, health systems, and hospitals.

What can you do to prepare?

- [Watch our E/M Coding Changes for 2021 CME webinars](#) hosted by Dr. Thomas Weida and Kim Huey (Free for Members).

Click here for more resources

Alabama adds more than 1,000 coronavirus cases



Alabama added more than 1,000 coronavirus cases overnight.

The Alabama Department of Public Health's Oct. 20 10 a.m. numbers show the state has had 174,528 COVID-19 cases since March. Of the new cases, 744 were confirmed with 299 probable cases, typically those identified by rapid testing.

The state has had 2,805 COVID-19 deaths.

Hospitalizations jumped to 859 yesterday, up from 805 on Oct. 17 and up from the recent low of 703 on Sept. 25.

[See the story from AL.com](#)



Need PPE?

PPE is still available!

- Direct Shipping now available
- Free shipping on orders over \$500
- Nitrile gloves now in stock

[Click here for info.](#)



Sanistrap

SaniStrap contains wristband, two refillable bottles, and one travel size refill bottle. Sanitizer is NOT included in order - liquid gel sanitizer is recommended.

[Click here for info.](#)



Hand Sanitizer

Hand Sanitizer Options Available are:

70% Alcohol Gel Hand Sanitizer. Twelve (12), One (1) Liter bottles with pull-tab cap.

[Click here for info.](#)

WHAT WE'RE READING

- [What doctors wish patients knew about physical distancing](#)
 - [Antibodies in Recovered COVID-19 Patients Fade Quickly, Study Says](#)
 - [COVID-19 Symptoms Linger for Months for Many](#)
 - [Pfizer Says Earliest COVID-19 Vaccine Application to US Would Be After Election](#)
 - [Flu vaccination: 6 tips to win over the undecideds](#)
-



The banner features a teal background. On the left, the Medical Association of the State of Alabama logo is at the top, followed by "COVID-19" in red and "EARN FREE CME" in large yellow letters. Below this, it says "FIND MORE INFORMATION ON COURSES HERE" in white. On the right, there is an illustration of a person in a white lab coat sitting at a desk with a computer, looking at a screen. In the background, there are stylized virus particles.

MEDICAL ASSOCIATION
OF THE STATE OF ALABAMA

COVID-19

EARN FREE CME

FIND MORE INFORMATION ON COURSES HERE



If you no longer wish to receive these emails, please [**unsubscribe**](#)

